



万邦集团  
APACHE FOOTWEAR



# Sustainability Newsletter



Vol. 03

June 2024

Publisher : Group HR / SEA  
Editor : Bertha Tseng



# APACHE Group Sustainability Vision & Mission

## VISION

“ To be the best partner with social and environmental leadership.

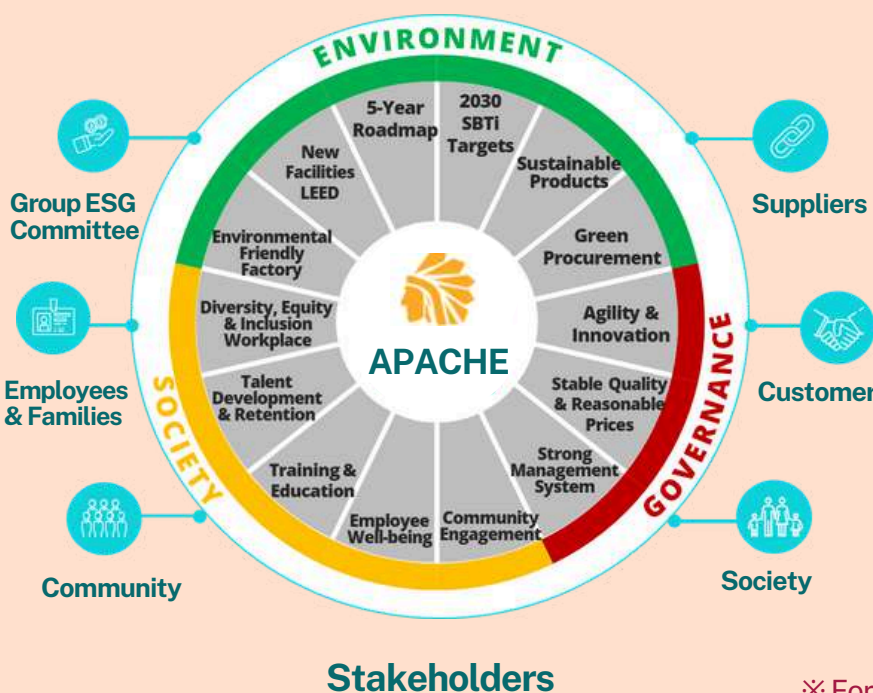
## MISSION

“ Setting the new best practices and go beyond the compliance standard for corporate sustainability.

To better achieve our mission and vision, Apache Group is committed to making a positive impact through concrete actions in three key areas environmental protection, social responsibility, and good corporate governance. At the same time, by implementing the group’s 5-year roadmap, we aim to achieve the group’s sustainability milestones and make significant contributions to the whole society!



## Our ESG Strategy



Based on the results of the 2022 carbon inventory, the total GHG emissions of the group were 278,793 tCO<sub>2</sub>e, equivalent to:

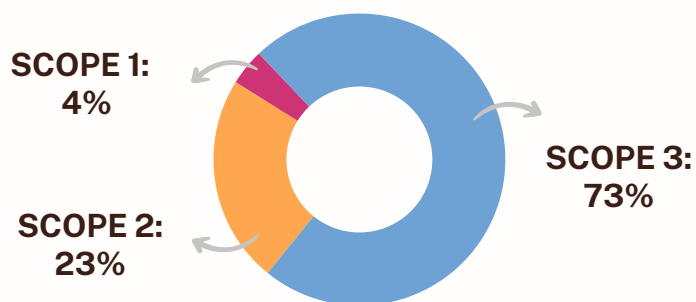
**60,607** cars' annual emissions

**11,616,375** trees' absorption of CO<sub>2</sub>

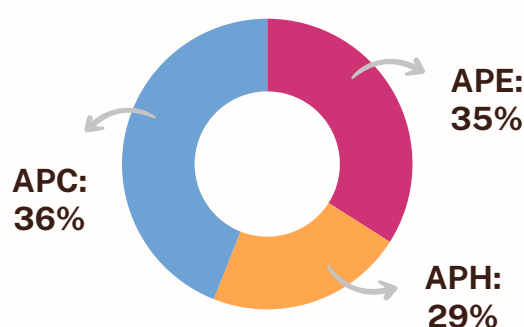
After submitting the carbon inventory, we successfully passed SBTi validation in April 2024. The figures below show our carbon emissions across Scopes 1 to 3 and their regional distribution. Particularly notable is Scope 3, which accounts for the main portion of the group's total emissions, emphasizing a key focus for future carbon reduction.

※ For more details on Scopes 1 to 3, please refer to the back!

## 2022 Total GHG Emissions (tCO<sub>2</sub>e)



## The % of GHG Emissions at 3 Sites





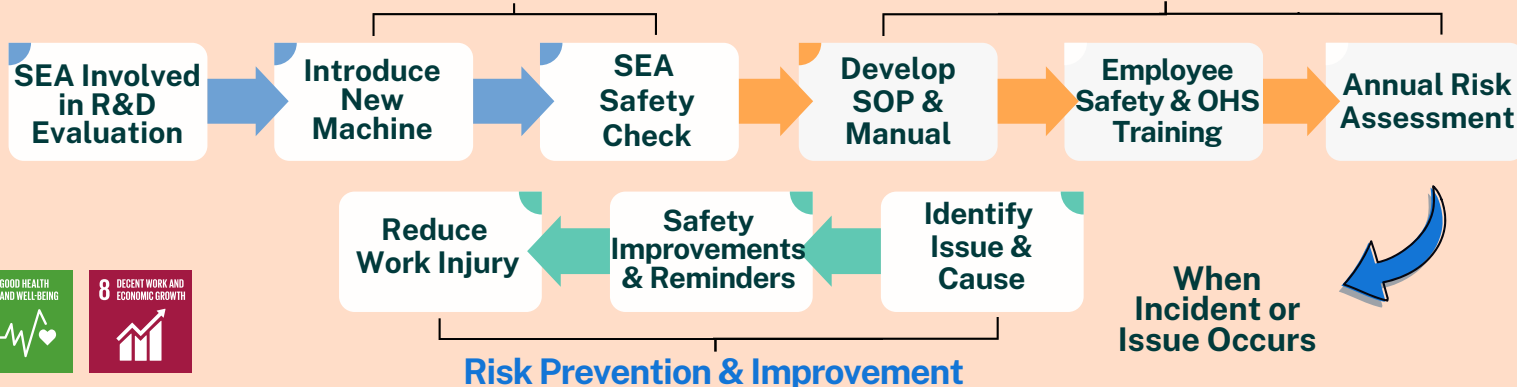
# Apache Focus - Environment Securing Employee Safety



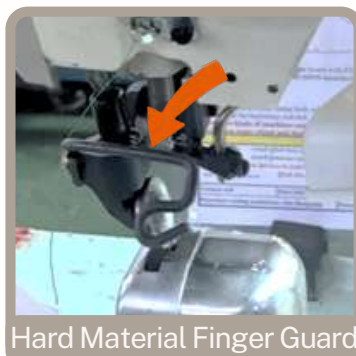
Apache considers employees as families and prioritizes their health and safety, especially machine safety in the workplace. We have established SOPs, provided training, conducted risk assessments, and implemented management and improvements to reduce workplace injuries.

## Risk Identification & Assessment

## Risk Management

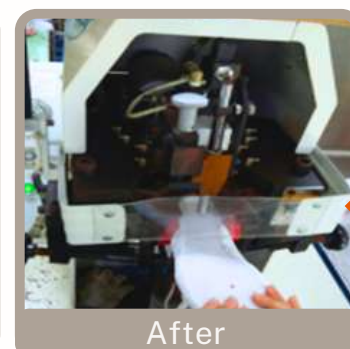
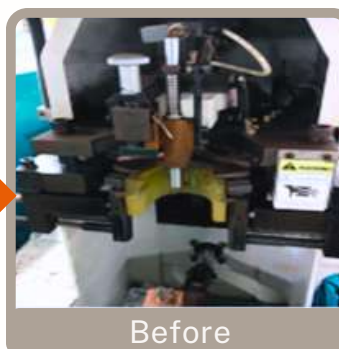


Besides conducting preventive measures for machines, clear SOPs and safety reminders are posted in the factory. Regular occupational health and safety training sessions ensure our employees are aware of safety procedures, jointly maintaining a safe workplace.



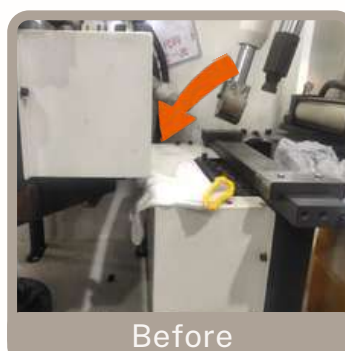
### Example 1

While changing the needle, the limit switch stops the machine to ensure safety, and the hard material needle guard prevents tampering and breakage.



### Example 3

The original walled-sole attaching machine has shear gaps on both sides. Adding raised working platforms with pressure-sensitive protective panels prevents the risk of hands being caught in the machine.



### Example 2

Sensors or shields were added to the injury-prone heel lasting machine to prevent hand injuries.

# Apache Focus - Soical

## Support and Care for Pregnant Employees



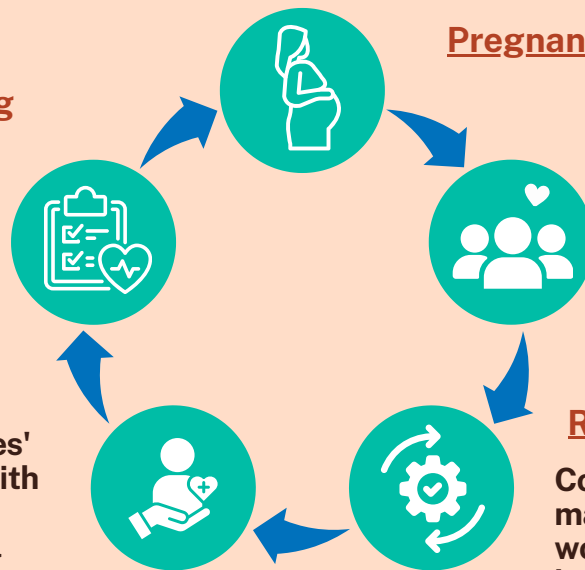
At Apache, we prioritize our employees' health and well-being, especially understanding the needs of pregnant employees in the workplace. HR, SEA, and relevant departments work closely to provide the best care for them through hazard assessments, job adjustments, equitable salary and benefits measures. For example, in APH, we provide monthly child-rearing allowances to female employees; in APC, nutritious meals with fresh fruits are offered; and in APE, separate dining area is offered for pregnant women. We are committed to offering the best care and support, creating the most supportive workplace environment for expectant mothers.

### Monitoring and Tracking

Regular health checks while ensuring a healthy workplace for employees.

### Benefits and Care

- Ensure pregnant employees' rights and benefits align with government policies.
- Offer professional medical consultations and health awareness sessions.



### Pregnant Employee

### Pregnancy Notification

Notify HR, SEA, and relevant supervisory departments

### Risk Assessment

Conduct health risk assessments and make job adjustments to mitigate workplace risks, such as night shifts, heavy lifting, high temperatures, or noisy environments.



Clinic doctor provides consultations



Pregnancy and lactation period seminars



Separate dining area



# Apache's Sustainability Learning Hub - Carbon Footprint Verification, CFV

**“ We Have Only One Earth. It’s Time To Act! ”**

As a key strategic partner of adidas, we actively support and in line with global sustainability initiatives. We have joined SBTi and initiated a group-wide carbon footprint assessment in 2022. Using this year as our baseline, we've set reduction targets for Scopes 1 to 3 by 2030, demonstrating our dedication to sustainable development through concrete actions.

### Scope 1: Direct

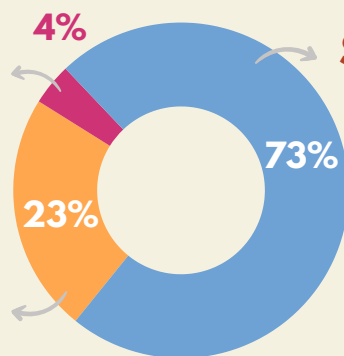


Emissions from production processes, like manufacturing, facilities and transportation.

### Scope 2: Indirect



Emissions from external sources of energy, such as purchased electricity.



### Scope 3: Other Indirect

All indirect upstream and downstream emissions in a company’s value chain.



★ By 2030 Target

From a 2022 base year, reduce scope 1 and 2 GHG emissions  
**42%**

★ By 2030 Target

From a 2022 base year, reduce scope 3 GHG emissions  
**51.6%**  
per million USD of value added

## Our Next Step

As a member of SBTi, Apache actively takes concrete actions to uphold environmental sustainability. Moving forward, we will:

**#1**

Conducting 2023 group carbon inventory

**#2**

Develop carbon reduction strategies and implement reduction measures for Scopes 1 to 3

**#3**

Disclose Apache 2023 carbon reduction report

**#4**

Continue implementing our 5-Year Sustainability Roadmap